

**NEW  
2022**

Wall and ceiling panels  
in decorative veneer

 **Facade systems**

 **Wall panels**

 **Skirting boards**

 **Bin and bike shelters**

 **Balcony railings**

 **Add-on balconies**

 STRAMA PANELS

**CLICK!** and done



## FACADE PANELS IN WINDOW VENEER

# Wood & Colour Design 140

Strama Panels Wood & Color Design 140 stands for prestige and elegance. Natural appearance of a wooden facade board. Both effective and functional and easy to install. The use of the highest-class materials for production guarantees reliability and durability, both in terms of structure and color. Your facade will retain the unchanged appearance of natural wood for many years. Strama Panels is a maintenance-free facade. Forget about cumbersome and costly maintenance.

Wood & Color Design panels are a whole range of colors that can be matched to the window and door joinery. It is a unique opportunity to change the image of a house, guesthouse, hotel or cottage on a recreational plot. Also a balcony, soffits or foundations.

The universal SEMS-LM mounting system ensures a completely dry installation. It is a quick and easy way to make a facade. The innovative SEMS-LM system allows you to combine all Strama Panels series in any way.



<b>Index</b>	SP-WCD140
<b>Backing material</b>	PVC
<b>Face layer</b>	window foil
<b>Mounting system</b>	SEMS-LM

<b>Panel length</b>	according to the order
<b>Panel width / covering width</b>	151 mm / 142 mm
<b>Panel thickness</b>	10 mm
<b>Mounting system thickness</b>	7 mm



### Basic colours:



In addition, on special request, we offer over 100 designs of Renolit, LG Hausys and Continental veneers in accordance with our stencil, consistent with the colors used by manufacturers of window and door joinery.





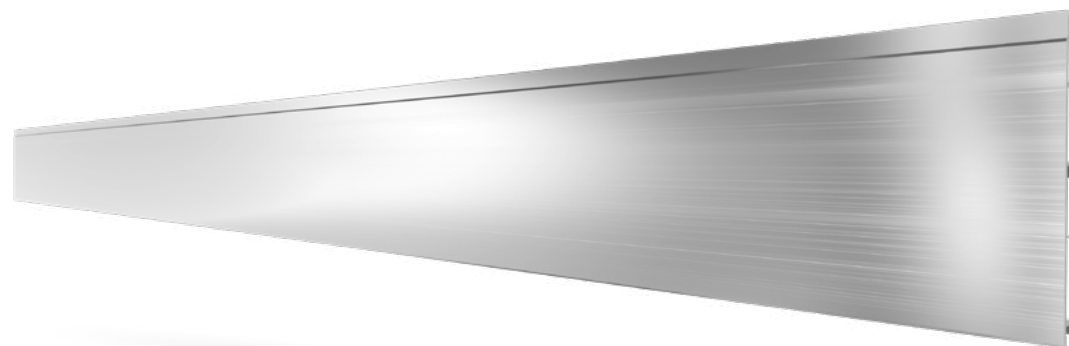
## ALUMINUM FACADE PANELS

# Alu Design

Strama Panels Alu Design aluminum facade panels meet the expectations of the most demanding customers, giving them the opportunity to implement even the most exclusive facilities. Panels Alu Design is a product of the highest quality and maximum durability.

It is an extruded aluminum profile with a wall thickness of up to 1.65 mm, which thanks to anodizing gives all the qualities of natural aluminum. The appropriate extrusion process gives the profile unique brushing appearance, which additionally increases the aesthetic value of the facade.

Strama Panels guarantee completely dry assembly and an innovative, quick and simple method of fixing and joining any series of Strama Panels.



<b>Index</b>	SP-AD
<b>Backing material</b>	100% anodized aluminum
<b>Face layer</b>	anode, powder coat or foil
<b>Mounting system</b>	SEMS-LM

<b>Panel length</b>	max. 6700 mm
<b>Panel width / covering width</b>	151 mm / 142 mm
<b>Panel thickness</b>	10 mm
<b>Mounting system thickness</b>	7 mm



### Basic colours:



Silver



Champagne



Bright golden



Dark golden



Olive



Anthracite

In addition, on special request, we offer over 100 designs of Renolit, LG Hausys and Continental veneers in accordance with our stencil, consistent with the colors used by manufacturers of window and door joinery or powder coating in any colour from the RAL palette.





## ALUMINUM BLINDS FACADE

# Alu Design

Strama Panels Alu Design facade blinds are a product of the highest quality and maximum durability. Their noble appearance can be a visible accent to the facade, and discreetly fulfill its basic function. It is an extruded aluminum profile with a wall thickness of up to 1.65 mm, which thanks to anodizing gives all the qualities of natural aluminum. The appropriate extrusion process gives the profile a unique brushing appearance, which additionally increases the aesthetic value of the facade. Strama Panel blinds guarantee a completely dry installation process.

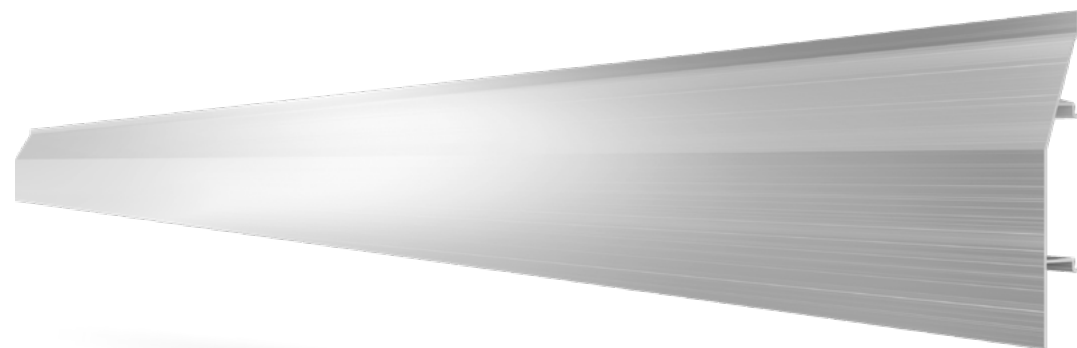
The universal SEMS-LM mounting system ensures a completely dry installation. It is a quick and easy way to make a facade. The innovative SEMS-LM system allows you to combine all Strama Panels series in any way.



ANODIZED ALUMINIUM



ANTI GRAFFITI



<b>Index</b>	SP-ADB
<b>Backing material</b>	100% anodized aluminum
<b>Face layer</b>	anode, powder coat or foil
<b>Mounting system</b>	SEMS-LM

<b>Panel length</b>	max. 6700 mm
<b>Panel width / covering width</b>	151 mm / 142 mm
<b>Panel thickness</b>	24 mm
<b>Mounting system thickness</b>	7 mm

### Basic colours:



Silver



Champagne



Bright golden



Dark golden



Olive



Anthracite

In addition, on special request, we offer over 100 designs of Renolit, LG Hausys and Continental veneers in accordance with our stencil, consistent with the colors used by manufacturers of window and door joinery or powder coating in any colour from the RAL palette.



# Accessories

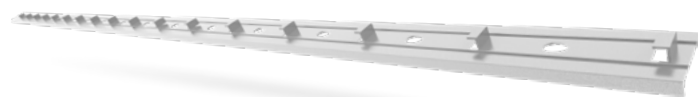
for facade panels

The Strama Panels facade system consists of panels and dedicated accessories for their assembly and finishing.



Styrofoam fixing dowel SEMS-KS

Console SEMS-AGS



Galvanized mounting rail SEMS-LM



Aluminum finishing profile „J“ SEMS-JA



Aluminum connection profile „H“ SEMS-HA



Aluminum corner profile „K“ SEMS-CA

In addition, on special request, we offer over 100 designs of Renolit, LG Hausys and Continental veneers in accordance with our stencil or powder coating in any colour from the RAL palette.



## What does the Strama Panels installation process look like?

Thanks to its simplicity, the highest quality and modern design, the Strama Panels facade system allows for unlimited use without the participation of a renovation team. Clean, fast and, above all, to your taste. See how easy it is.

1



You order to size

2



You assemble system moldings

3



You assemble the panels

4



„Click“... and done!

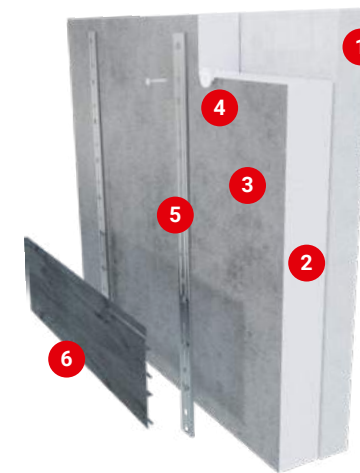
# DryTherm® insulation system

The modern DryTherm® thermal insulation system uses the SEMS® assembly system to attach thermal insulation and Strama Panels. The thermal insulation is made in the dry method and allows the use of polystyrene or mineral wool.

## Advantages of the DryTherm® thermal insulation system:

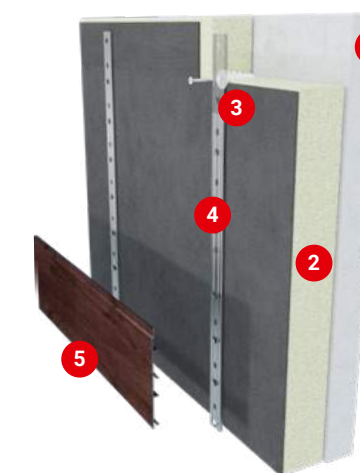
- the ability to perform thermal insulation works even at air temperature below zero,
- insulation works can be carried out in stages, i.e. in several-meter sections, which allows you to significantly save on the cost of renting or purchasing scaffolding,
- air gaps remain between the thermal insulation and Strama Panels, which additionally improve the thermal insulation properties of the system and ensure proper ventilation of the building and diffusion of water vapor through the walls,
- easy to clean - the facade can be washed with water and detergent.

## Mounting methods for DryTherm®



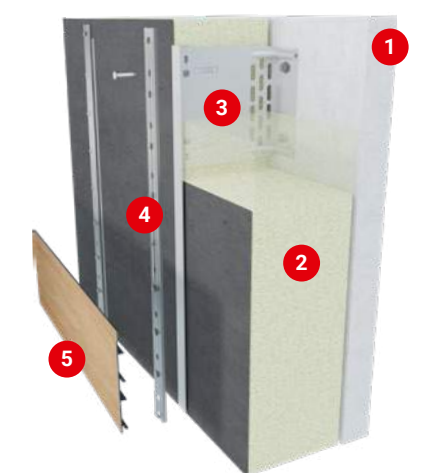
### Mounting on the spiral plug SEMS-KS (polystyrene)

1. The wall of the building
2. Styrofoam
3. Mesh + glue
4. SEMS-KS spiral pin
5. SEMS-LM mounting rail
6. Strama Panels



### Installation on the spiral pin SEMS-KS (mineral wool)

1. The wall of the building
2. Mineral wool
3. SEMS-KS spiral pin
4. SEMS-LM mounting rail
5. Strama Panels



### Mounting on the SEMS-AGS console (mineral wool)

1. The wall of the building
2. Mineral wool with a veil
3. SEMS-AGS console
4. SEMS-LM mounting rail
5. Strama Panels

## Mix at will

The innovative, universal SEMS-LM mounting system allows you to connect all series of Strama Panels and to mount them horizontally or vertically.



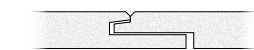
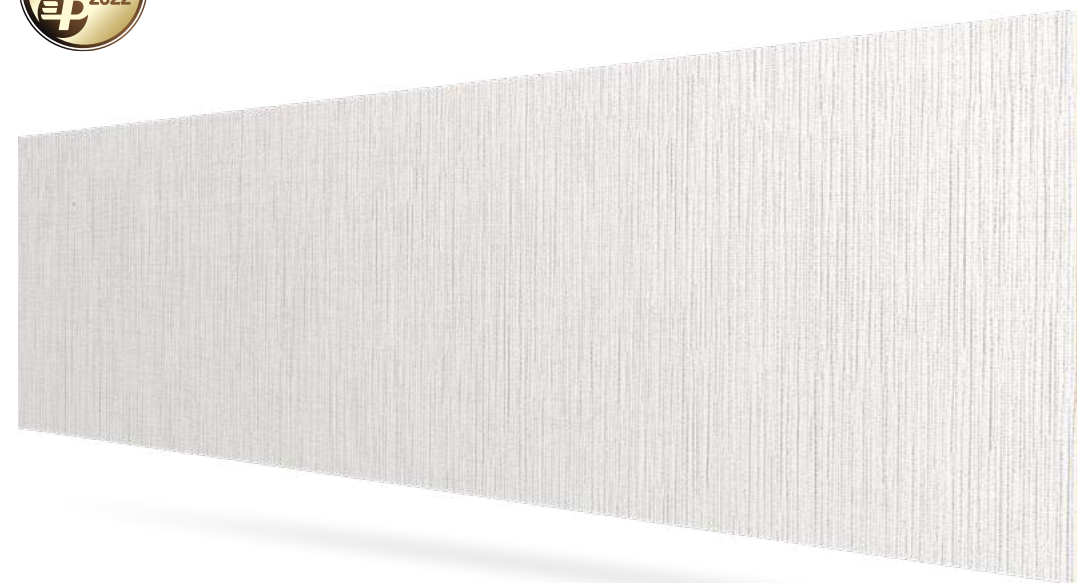


**WALL AND CEILING PANELS  
IN DECORATIVE VENEER**

# Interior Design

Wall panels in the decorative Interior Design veneer are an ideal product for use in modular and frame-work construction. It performs both construction and finishing functions. The product is of the highest quality, functional and easy to install. Perfect for both walls and attics as well as renovation works.

Interior Design panels are a wide range of veneer colours, giving a unique opportunity to change the image of the interior and give it a special, exclusive character.



Fastening system tongue and groove

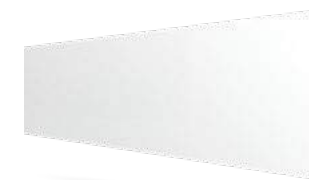
<b>Index</b>	SP-ID
<b>Backing material</b>	chipboard, furniture board
<b>Face layer</b>	PP, PVC veneer
<b>Mounting system</b>	tongue and groove

<b>Panel length</b>	2180 mm, 2800 mm, other*
<b>Panel width / covering width</b>	623 mm / 600 mm / other*
<b>Panel thickness</b>	12 mm
<b>Weight</b>	7,9 kg/m <sup>2</sup>

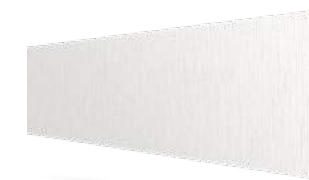
\* on special request



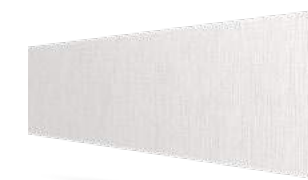
## Basic colours:



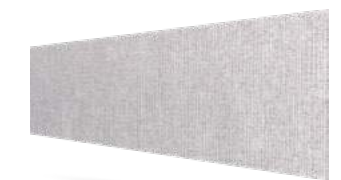
White G PP A



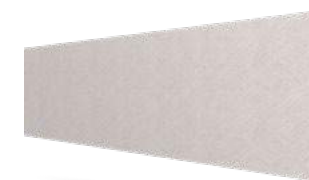
White Textile 426 V R



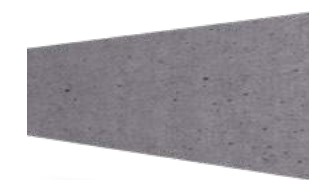
Light Grey Textile V R



Grey Textile V



Me Twill Cream



Grey Concrete



Me Lagoda Ash Aleached R



Turner Oak Toffee

In addition, on special request, we offer over 100 designs of Renolit, LG Hausys and Continental veneers in accordance with our stencil, consistent with the colors used by manufacturers of window and door joinery.

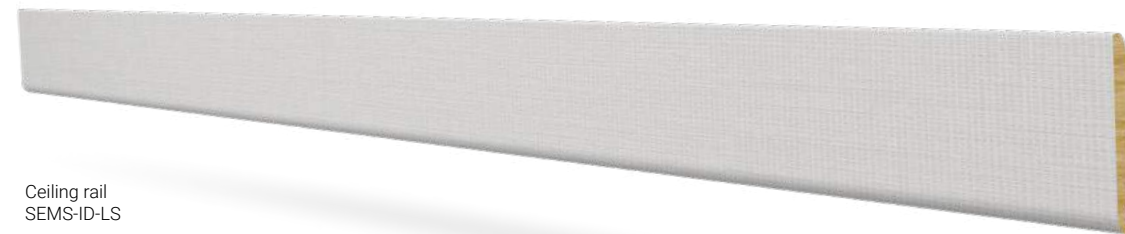




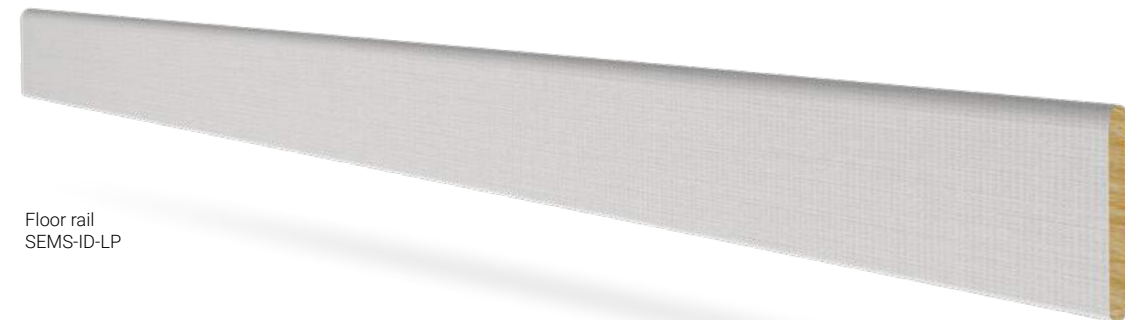
# Accessories

for Interior Design panels

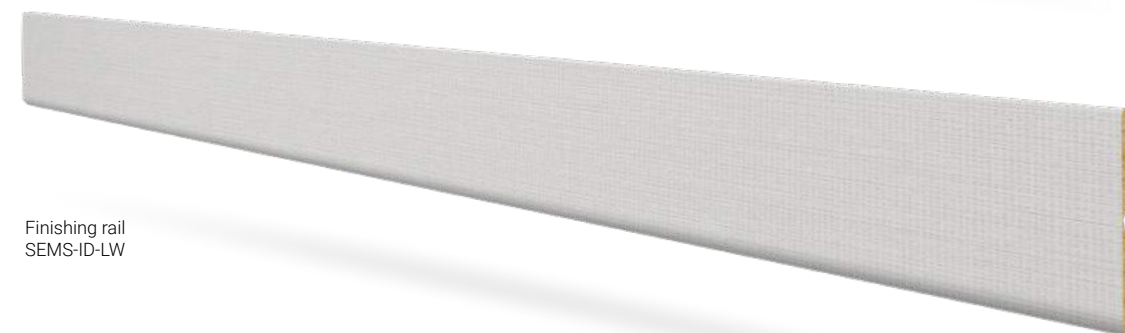
The Strama Panels walls system consists of panels and dedicated accessories for their assembly and finishing.



Ceiling rail  
SEMS-ID-LS



Floor rail  
SEMS-ID-LP



Finishing rail  
SEMS-ID-LW

Interior Design accessories are a wide range of veneer colours, giving a unique opportunity to change the image of the interior and give it a special, exclusive character. On special request, we offer over 100 designs of Renolit, LG Hausys and Continental veneers according to our stencil.



## Simplicity, aesthetics, durability

Our system consists of several elements, from which you can easily change your interior.

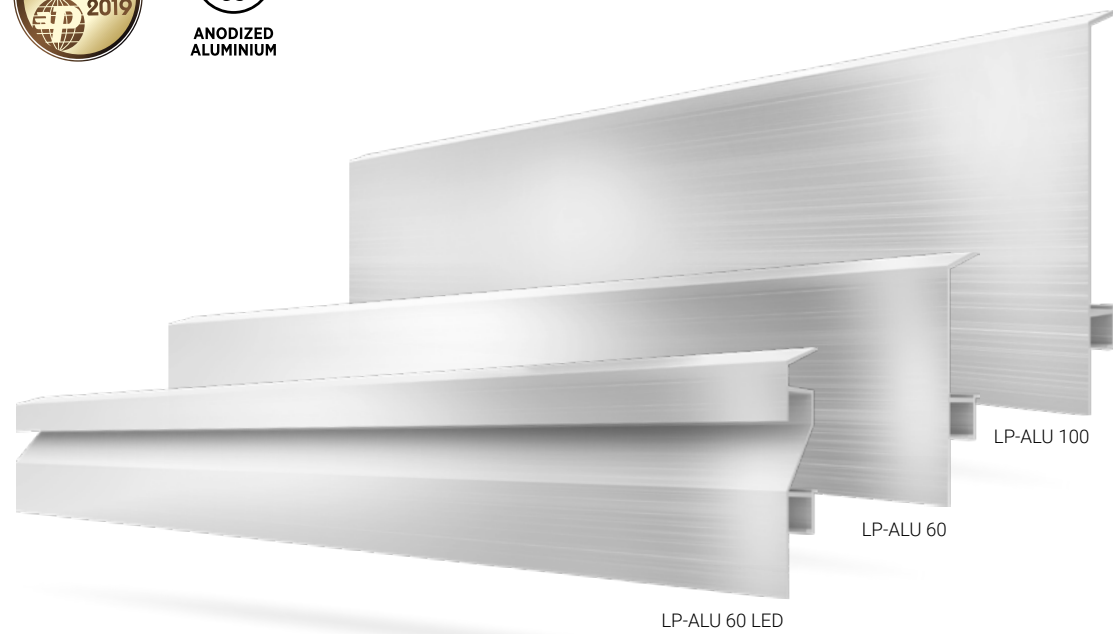
## ALUMINUM

# skirting boards

Strama Panels aluminum skirting boards look noble. They can be both a visible accent of the interior, and also discreetly fulfill their basic function. Thanks to the use of aluminum, they are easy to clean and resistant to contact with water when cleaning the floor. You can take them off and put them back on easily and quickly. This allows you to easily hide new cables under them. We will do it without the risk of damaging the wall, skirting board or floor.

Strama Panels skirting boards come in two variants; i.e. in a straight version, as well as with a special internal guide designed to mount the LED strip.

The skirting board equipped with LED strip can act as additional lighting in the room.

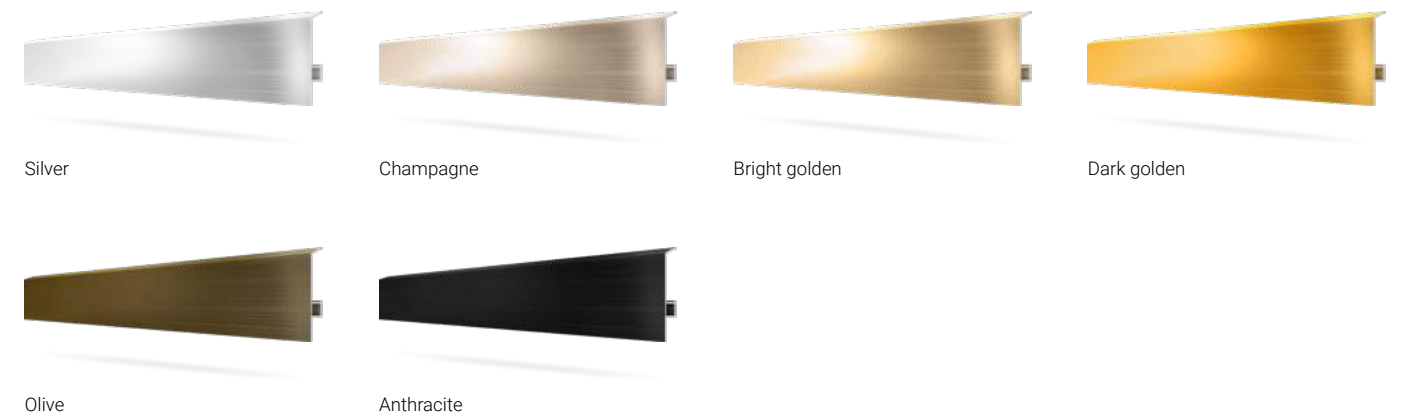


<b>Index</b>	LP-ALU 100, LP-ALU 60, LP-ALU 60 LED
<b>Backing material</b>	100% anodized aluminum
<b>Face layer</b>	anode, powder coat or foil

<b>Length</b>	2200 mm
<b>Width</b>	60 or 100 mm
<b>Thickness</b>	18 mm



### Basic colours:



In addition, on special request, we offer over 100 designs of Renolit, LG Hausys and Continental veneers in accordance with our stencil, consistent with the colors used by manufacturers of window and door joinery or powder coating in any colour from the RAL palette.





# Bin and bike shelters

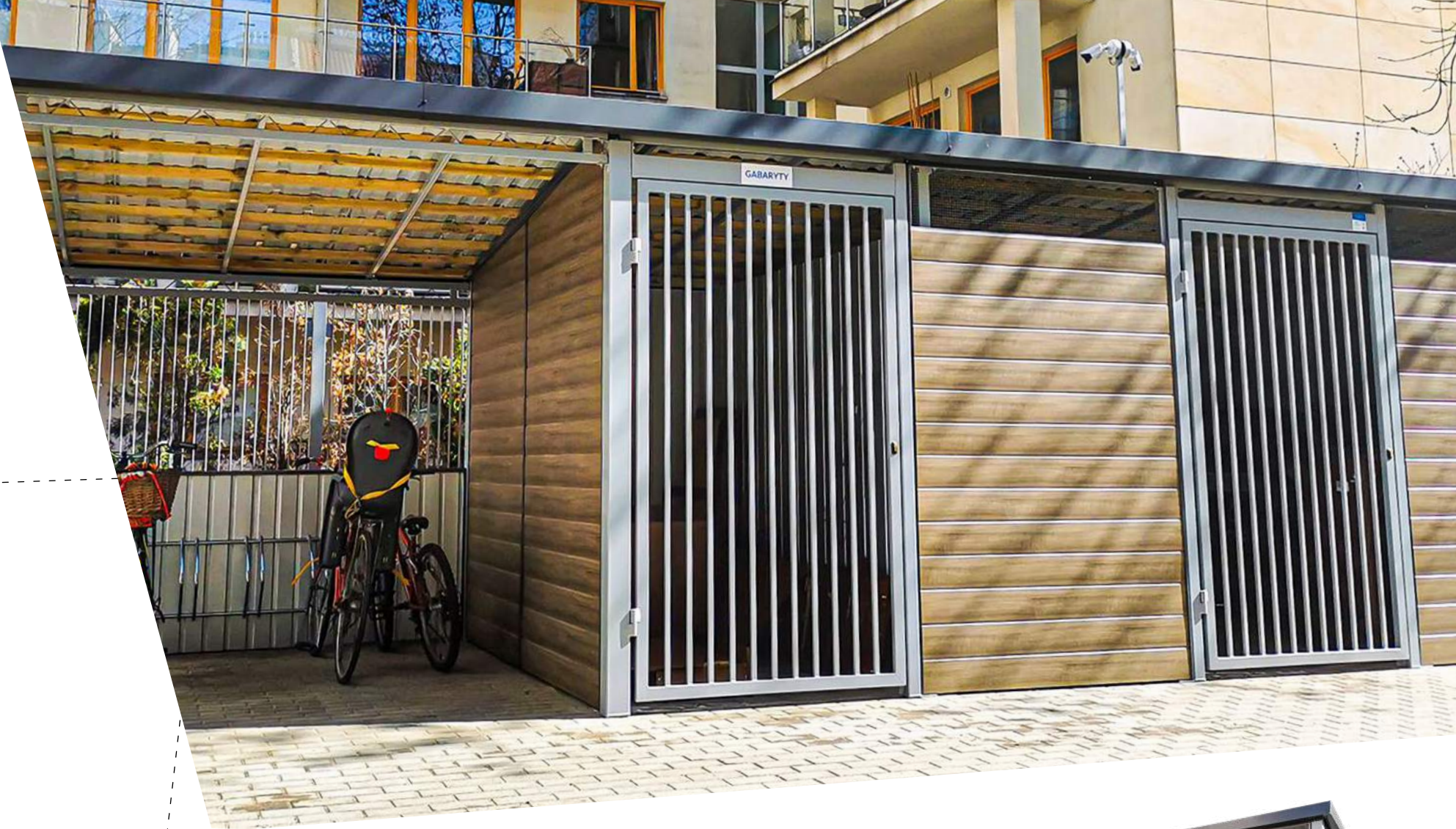
– a modern and economical way to modernize and improving the aesthetics of waste collection points

Strama Panels bin shelters are a project tailored to individual orders and an unprecedented speed of assembly.

The aesthetic gazebo blends into the surroundings, providing a solution that eliminates all the unpleasant aspects of throwing out and storing waste.



- |  |  |
|--|--|
| 1. Solid steel construction                                | 8. PVC gutters   |
| 2. Posts and gate, hot-dip galvanized and powder coated    | 9. LED lighting with motion sensor powered by a solar battery    |
| 3. Interior: bumpers and sheets with aluminum-zinc coating | 10. The ground made of paving stones                             |
| 4. The roof is made of standing seam sheet                 | 11. A slot that facilitates cleaning                             |
| 5. Elevation of Strama Panels with anti graffiti system*   | 12. Chamber for waste and large waste in an integrated structure |
| 6. Stainless shootbolt and steel lock                      | 13. Constructions produced in any shape and size                 |
| 7. Galvanized ventilation grid                             | * when using Renolit® FX veneer                                  |



Examples of Strama Panels bin shelters:



We offer powder coated structures in any color from the RAL palette and facades made of Strama Panels Wood & Color Design panels in veneer in over 100 designs of Renolit, LG Hausys and Continental veneers in accordance with our stencil.





# Balcony railings

– a wide range of patterns and colors,  
matched for every facade

Strama Panels balcony railings are individually tailored to the client's needs. Made on a steel structure according to the indicated dimensions, with the facade in the selected pattern and color matched to the color of the windows, or according to your preferences.

The distinguishing feature of Strama Panels balcony balustrades is the double-sided structure, which allows you to choose an individual pattern and color of the facade inside and outside the balcony - independently of each other. Additionally, it is possible to install a strip with LED lighting along the railing.



1. Solid steel structure
2. Elevation made of Strama Panels
3. Steel fasteners
4. Possibility to install LED backlight



## The most important features of Strama Panels balcony railings:

- opaque, provide full privacy,
- custom-made production,
- steel construction, hot-dip galvanized and powder coated,
- elevation made of panels in window veneer or anodized aluminum panels.

We offer powder-coated structures of our railings in any color from the RAL palette. Railing facades can be made of made of Strama Panels Wood & Color Design panels in veneer in over 100 designs of Renolit, LG Hausys and Continental veneers in accordance with our stencil.



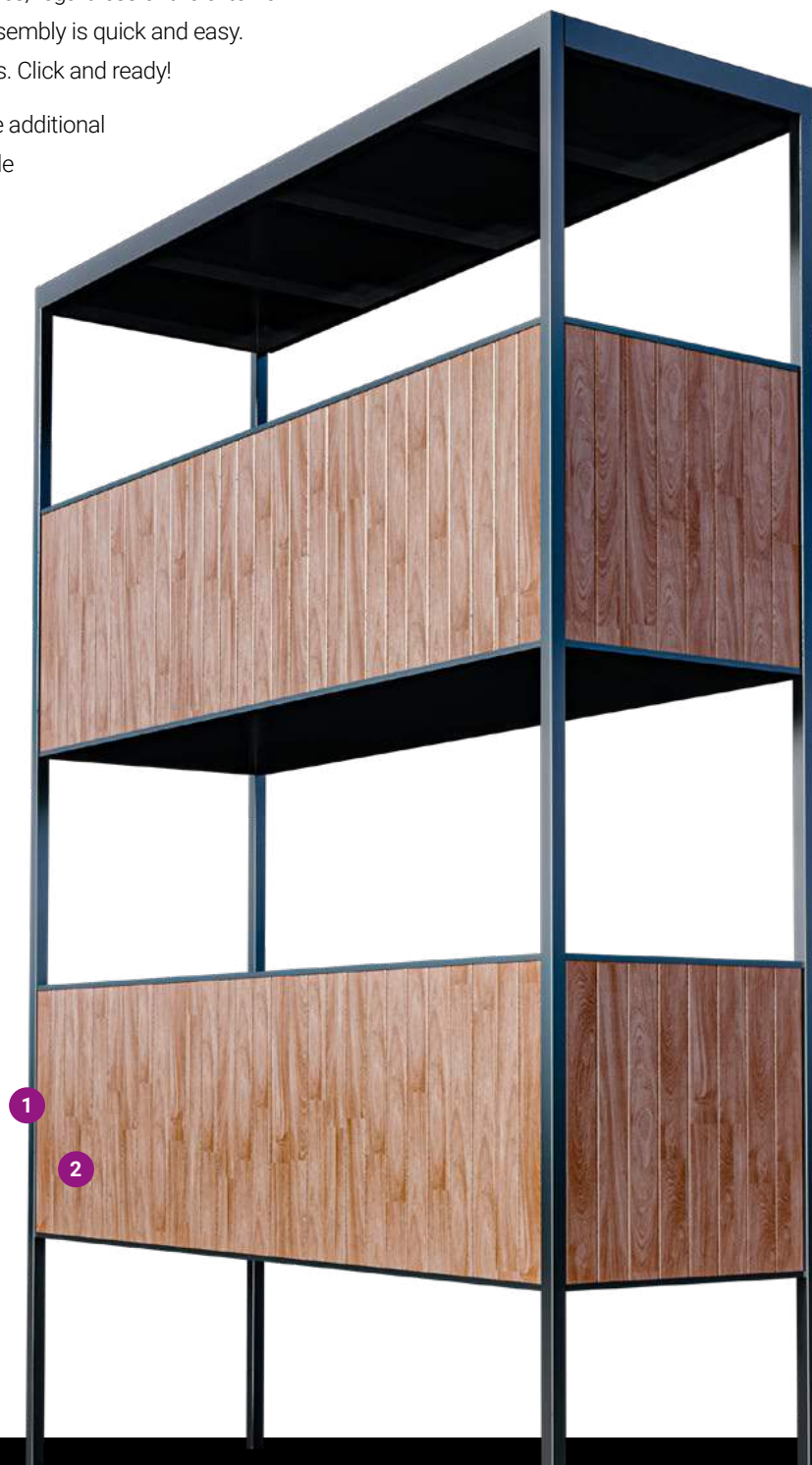


# Add-on balconies

– modern structures adapted to the location and architectural situations

Strama Panels add-on balconies are a unique solution due to the free choice of colors and textures, regardless of the external appearance of the building. Assembly is quick and easy. Like all Strama Panels products. Click and ready!

The supporting structure of the additional balconies is made of steel, while the facade is made of panels according to the selected pattern and color. You can choose the color of the panels to the color of the windows, or according to your preferences.



1. Solid steel structure
2. Elevation made of Strama Panels



## The most important features of Strama Panels add-on balconies:

- custom-made production
- steel construction, hot-dip galvanized and powder coated
- elevation made of panels in window veneer or anodized aluminum panels

We offer powder-coated structures of our railings in any color from the RAL palette. Railing facades can be made of Strama Panels Wood & Color Design panels in veneer in over 100 designs of Renolit, LG Hausys and Continental veneers in accordance with our stencil.





**We are winners of many awards  
and distinctions, including:**



ul. Rolnicza 138  
05-092 Lomianki, Poland  
phone: +48 504 265 748  
e-mail: [biuro@stramagroup.com](mailto:biuro@stramagroup.com)

**[stramapanel.com](http://stramapanel.com)**

